

Angels' Carol

Words and music by
JOHN RUTTER (b. 1945)

Brightly $\text{♩} = 69$

mf eagerly

VOICE



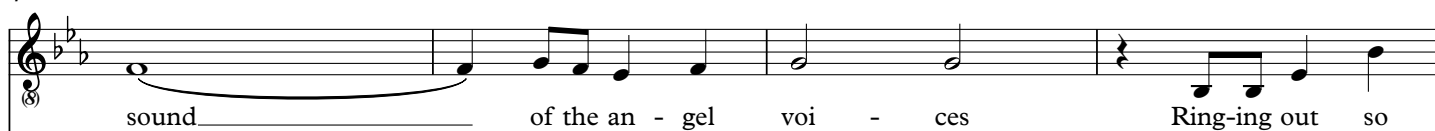
1. Have you heard the

PIANO

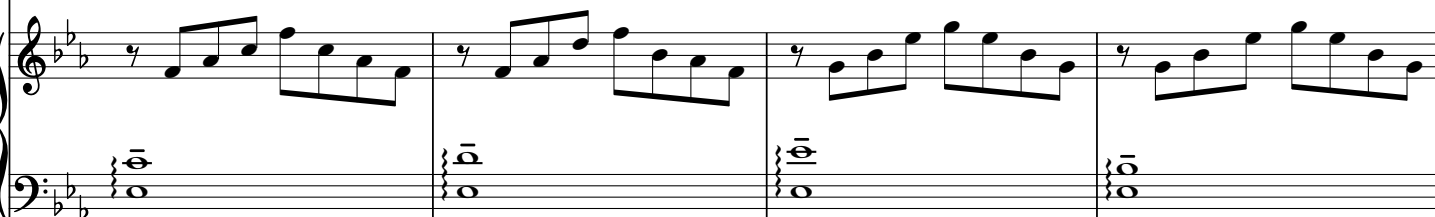


mf always rhythmic

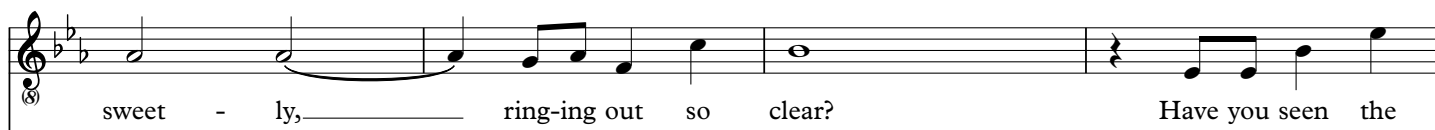
4



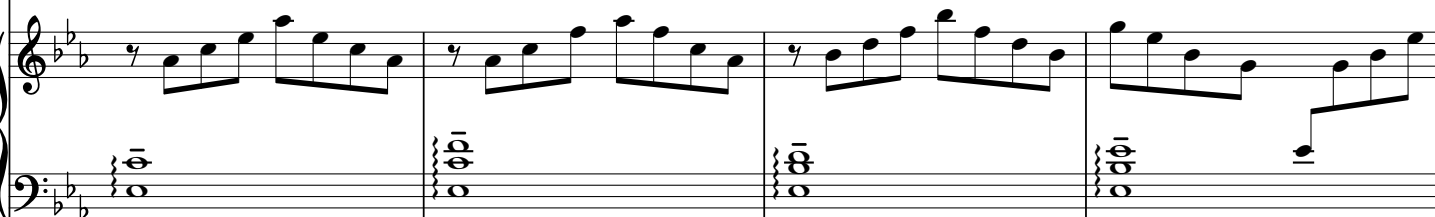
sound of the an - gel voi - ces Ring-ing out so



8



sweet - ly, ring-ing out so clear? Have you seen the



Duration: 3.5 mins

2 Angels' Carol

12

star shin-ing out so bright - ly As a sign from

This system contains measures 12 through 15. It features a vocal line in treble clef with lyrics and a piano accompaniment in grand staff. The piano part includes a right-hand melody and a left-hand bass line. The key signature has two flats (B-flat and E-flat), and the time signature is 4/4. The lyrics are: "star shin-ing out so bright - ly As a sign from".

16

God that Christ the Lord is here? Have you heard the

This system contains measures 16 through 19. It features a vocal line in treble clef with lyrics and a piano accompaniment in grand staff. The piano part includes a right-hand melody and a left-hand bass line. The key signature has two flats (B-flat and E-flat), and the time signature is 4/4. The lyrics are: "God that Christ the Lord is here? Have you heard the".

20

news that they bring from hea - ven To the hum - ble

Ped.

This system contains measures 20 through 23. It features a vocal line in treble clef with lyrics and a piano accompaniment in grand staff. The piano part includes a right-hand melody and a left-hand bass line. The key signature has two flats (B-flat and E-flat), and the time signature is 4/4. The lyrics are: "news that they bring from hea - ven To the hum - ble". Pedal markings are present under the piano accompaniment.

24

shep - herds who have wait - ed long?

cresc.

This system contains measures 24 through 27. It features a vocal line in treble clef with lyrics and a piano accompaniment in grand staff. The piano part includes a right-hand melody and a left-hand bass line. The key signature has two flats (B-flat and E-flat), and the time signature is 4/4. The lyrics are: "shep - herds who have wait - ed long?". A *cresc.* (crescendo) marking is present above the vocal line and below the piano accompaniment.

for Lucian Nethsingha

Before the paling of the stars

Christina Rossetti
(1830–94)

CECILIA McDOWALL
(b. 1951)

Tender, expressive, always flowing ♩ = c.88

VOICE *p dolce*

Be - fore the pal - ing of the stars, Be -

PIANO *p legato*

con Ped.

5

-fore the win - ter morn, Be - fore the ear - liest cock - crow, —

9 *mf* *mp dolce*

Je - sus Christ was born: Born in a

mf *mp*

Duration: 4 mins

13

sta - ble, Cra - dled in a man - ger, In the world his

17

hands had made, Born a stran - ger. Born in a sta - ble,

22

Cra - dled in a man - ger, In the world his hands had made, Born

26

a stran - ger. Priest and king lay

I sing of a maiden

Words: 15th-century English

JOHN RUTTER
(b. 1945)

Andante espressivo ♩ = c.66 *p dolce*

VOICE

I sing of a mai - den _____

PIANO

p legato sempre

5 *mp* *mf*

_____ that is make - less: King of all Kings _____

cresc. *mf*

Ped.

9 *mp* *p*

_____ to her son she ches. _____ He came all so

mp *p*

Ped.

Duration: 3 mins

13

still there his mo - ther was, As dew in

mp

17

A - pril that fall - eth on the grass. He came all so

p

21

still to his mo - ther's bower As dew in

mp

25

A - pril that fall - eth on the flow'r. He came all so

pp

sim. *dim.* *pp*

Mid-winter

Christina Rossetti (1830–94)

BOB CHILCOTT
(b. 1955)

Gentle feel, but not too slow ♩ = c.92

VOICE

PIANO

p

In the bleak mid - win - ter

p dolce

con Ped.

5

frost-y wind made moan, Earth stood hard as i - ron, wa-ter like a

10

mp espress.

mf

mp

stone; Snow had fall - en, snow on snow, In the

mp espress.

cresc.

mf

Duration: 3.5 mins

15

bleak mid - win - ter, long a - go, long a - go.

mp *p*

20

Our God, heav'n can - not hold him nor earth sus - tain:

mp *dolce* *mp pesante*

25

Heav'n and earth shall flee a-way when he comes to reign: In the bleak mid-

cresc. *f* *f espress.*

30

-win - ter a sta - ble place suf - ficed The Lord God Al - might - y Je - sus

mf

My Lord has Come

Words and music by
WILL TODD (b. 1970)

With feeling, always flowing ♩ = 60

mp espress.

VOICE

Shep-herds, called by an - gels, —

PIANO

p espress.

Ped.

4

called by love_ and an - gels; no place for them but a sta - ble. My

mf *pp*

mp *pp*

(Ped.) Ped. *sim.*

8

Lord has come, my_ Lord has come, my_ Lord

mf *mf*

Duration: 3.5 mins

13

has come.

l.h. *l.h.*

pp

Ped.

This system contains measures 13, 14, and 15. The vocal line begins with the lyrics "has come." and features a long note in measure 14. The piano accompaniment consists of a steady eighth-note bass line in the left hand and chords in the right hand. Dynamic markings include *pp* and *l.h.* (left hand) for the piano part. A *Ped.* (pedal) marking is present below the piano part.

16

mp espress.

Sa - ges, search-ing for stars, search-ing for love in

(Ped.)

This system contains measures 16, 17, and 18. The vocal line has the lyrics "Sa - ges, search-ing for stars, search-ing for love in". The piano accompaniment features triplet figures in the right hand. Dynamic markings include *mp espress.* and *pp*. A *(Ped.)* marking is present below the piano part.

19

mf *pp*

hea - ven; no place but a sta - ble. My

mp *pp*

(Ped.) \wedge *sim.*

This system contains measures 19, 20, and 21. The vocal line has the lyrics "hea - ven; no place but a sta - ble. My". The piano accompaniment features a steady eighth-note bass line. Dynamic markings include *mf*, *pp*, and *mp*. A *(Ped.)* marking with a \wedge symbol and *sim.* (sostenuto) is present below the piano part.

22

Lord has come, my Lord has come, my

This system contains measures 22, 23, and 24. The vocal line has the lyrics "Lord has come, my Lord has come, my". The piano accompaniment features a steady eighth-note bass line. Dynamic markings include *pp*.

for Jan and Mary

Scots Nativity

Traditional Scottish text

ALAN BULLARD
(b. 1947)

Gently flowing ♩ = c.108

VOICE

p

This day _____ to _____

PIANO

p

senza Ped.

6

you is _____ born a child _____ Of _____ Ma - ry _____ meek, the _____ Vir - gin

12

mp

mild: That bless - ed _____ bairn, so _____ lov - ing and kind, Shall

mp

con Ped.

Duration: 2.5 mins

17 *poco tenuto* *a tempo*
p
 now re - joice both heart and mind; Ba - low,
p

22 *mp*
 lam-my, ba - loo - ba - low. And now shall
mp

27 *poco*
 Ma - ry's lit - tle boy For - ev - er be our
poco

32 *f*
 hope and joy; E - ter - nal be his reign here on
f

Snow Angel

Words and music by
SARAH QUARTEL (b. 1982)

With reverence and wonder ♩ = 60

SOLO CELLO
(OPTIONAL)*

VOICE

PIANO

9

With easy lilt ♩ = 63

16

mp

1. I

Duration: 4.5 mins

* If the cello is omitted, the piano may play the opening cello line, or, alternatively, the piece may begin at bar 13, substituting the content of bar 15 in its place. The backing track is without cello and begins at bar 13.

'Snow Angel' is the fifth movement of Sarah Quartel's choral work *Snow Angel* (SSAA, ISBN 978-0-19-351228-3; SATB, ISBN 978-0-19-351229-0).

21

went to my win-dow one bright win-ter's morn and gazed at the new fall-en snow. The

25

world o-ver-tak-en by flur-ries of white had set my sur-round-ings a-glow. I

29

looked to the hea-vens seek-ing the source of this won-der-land new-ly ap-peared. When

33

there I spied a snow an-gel hold-ing the flakes and spread-ing them near. She sang:

This endris night

15th cent., adap.

SARAH QUARTEL
(b. 1982)

Luminous ♩ = 56

VOICE *p*

PIANO *p*

5

en - dris¹ night I saw a sight, a star as bright as day, And

9 *mp*

ev - er a-mong, a mai - den sung, 'Lul - ly, by by, lul - lay'. This

13

love - ly la - dy sat and sang, And to her child did say: 'My

Duration: 3 mins

¹endris = other

17

son, my bro - ther, fa - ther dear, Why_ li - est thou thus__ in hay? My

21

sweet - est bird,_ 'tis thus__ re-quired, though thou__ be king_ ve - ray,² but

25

ne - ver-the - less I will__ not cease to sing "By by,__ lul - lay." The

29

child then spake whilst she__ did sing, and_ to__ his mo-ther did say, 'Yea,'

²veray = in truth